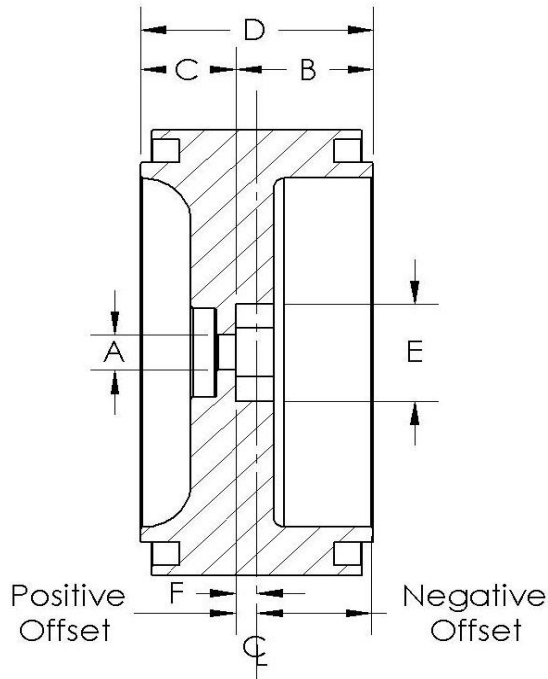


Rim	Insert	size	A	B	C	D	E	F
SLW 1.35	225	2.2	7mm	0.985	0.37	1.355	12mm	0.3075
	350	2.2	7mm	0.86	0.495	1.355	12mm	0.1825
	475	2.2	7mm	0.735	0.62	1.355	12mm	0.0575
	600	2.2	7mm	0.61	0.745	1.355	12mm	-0.0675
	725	2.2	7mm	0.485	0.87	1.355	12mm	-0.1925
SLW 1.00	225	2.2	7mm	0.63	0.37	1	12mm	0.13
	350	2.2	7mm	0.505	0.495	1	12mm	0.005
	475	2.2	7mm	0.38	0.62	1	12mm	-0.12
	600	2.2	7mm	0.255	0.745	1	12mm	-0.245
	725	2.2	7mm	0.13	0.87	1	12mm	-0.37
SLW .700	225	2.2	7mm	0.33	0.37	0.7	12mm	-0.02
	350	2.2	7mm	0.205	0.495	0.7	12mm	-0.145
	475	2.2	7mm	0.08	0.62	0.7	12mm	-0.27
	600	2.2	7mm	-0.045	0.745	0.7	12mm	-0.395
	725	2.2	7mm	-0.17	0.87	0.7	12mm	-0.52
SLW .500	225	2.2	7mm	0.13	0.37	0.5	12mm	-0.12
	350	2.2	7mm	0.005	0.495	0.5	12mm	-0.245
	475	2.2	7mm	-0.12	0.62	0.5	12mm	-0.37
	600	2.2	7mm	-0.245	0.745	0.5	12mm	-0.495
	725	2.2	7mm	-0.37	0.87	0.5	12mm	-0.62
SLW .700 NT	225	2.2	7mm	0.645	0.055	0.7	12mm	0.295
	350	2.2	7mm	0.52	0.18	0.7	12mm	0.17
	475	2.2	7mm	0.395	0.305	0.7	12mm	0.045
	600	2.2	7mm	0.27	0.43	0.7	12mm	-0.08
	725	2.2	7mm	0.145	0.555	0.7	12mm	-0.205



Rim	Insert		A	B	C	D	E	F
SLW .500 nt	225	2.2	7mm	0.445	0.055	0.5	12mm	0.195
	350	2.2	7mm	0.32	0.18	0.5	12mm	0.07
	475	2.2	7mm	0.195	0.305	0.5	12mm	-0.055
	600	2.2	7mm	0.07	0.43	0.5	12mm	-0.18
	725	2.2	7mm	-0.055	0.555	0.5	12mm	-0.305
DH Pro Comp	335	2.2	7mm	0.535	0.665	1.2	12mm	-0.065
	460	2.2	7mm	0.41	0.79	1.2	12mm	-0.19
	585	2.2	7mm	0.285	0.915	1.2	12mm	-0.315
Revolver		2.2	7mm	0.405	1.005	1.41	12mm	-0.3
Revolver R-2		2.2	7mm	0.455	0.655	1.11	12mm	-0.1
Lh pro comp		1.9	5mm	0.35	0.45	0.8	12mm	-0.05
SX - 1		1.9	5mm	0.29	0.51	0.8	12mm	-0.11
SX - 1 losi mrc offset		1.9	5mm	0.45	0.35	0.8	12mm	0.05
SX - 2		1.9	5mm	0.29	0.51	0.8	12mm	-0.11
SX - 2 losi mrc offset		1.9	5mm	0.45	0.35	0.8	12mm	0.05
SX - 3		1.9	5mm	0.29	0.51	0.8	12mm	-0.11
SX - 3 losi mrc offset		1.9	5mm	0.45	0.35	0.8	12mm	0.05
SX - 4		1.9	5mm	0.29	0.51	0.8	12mm	-0.11
SX - 4 losi mrc offset		1.9	5mm	0.45	0.35	0.8	12mm	0.05
Revolver Pro comp 40		3.75	12mm	0.7	1.05	1.75	17mm	-0.175